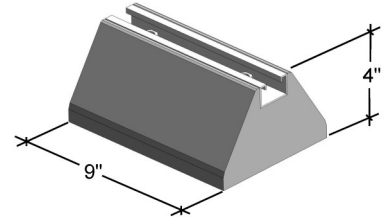


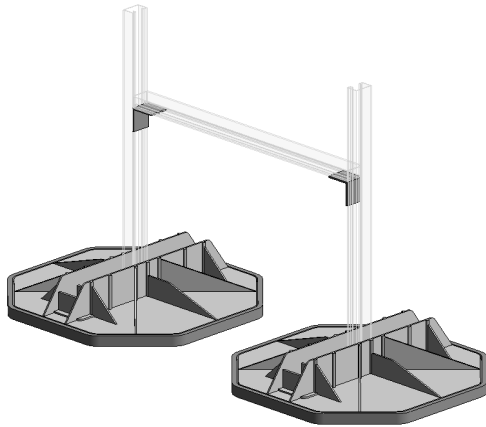
**EcoFoot** is designed for a wide variety of rooftop applications and with its large footprint provides for greater stability and load bearing. The product design allows for mounting with strut channel, threaded rod, or square tubing. Made of HDPE (High Density Poly Ethylene), each foot comes with a rubber base mat for vibration absorption and roof surface protection.

EcoFoot is ideal for supporting rooftop HVAC equipment, heavy chiller equipment, heavier and larger pipe and duct work, safety stairs / walkways, and can be seismic rated.

**EcoBlok**, designed for lighter weight applications, can be used on its own or with a standard width 1-5/8" strut channel insert for secure fastening of pipe, tube, and conduit. EcoBlok is made from recycled UV stabilized tire rubber, max loading is 500 lbs., and carries a 10 year warranty as does EcoFoot.

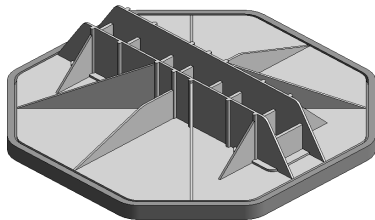


**Hardware Hot Dipped Galvanized—Strut Channel Pre-Galv.**

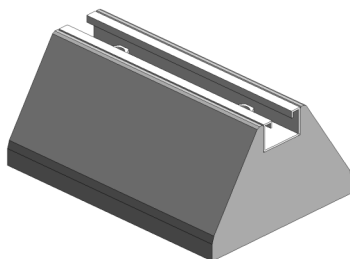


**Part # QF175**  
EcoFoot Quick Frame Kit  
"build your own frame"

incl: (2) EFB, (2) strut corner fittings and hardware:  
Strut channel not included



**Part # EFB**  
EcoFoot c/w rubber base mat



**Part # EB8S**  
EcoBlok c/w strut channel mounting insert

*Part # EB8—EcoBlok only*